

**Barco tipo granelero**

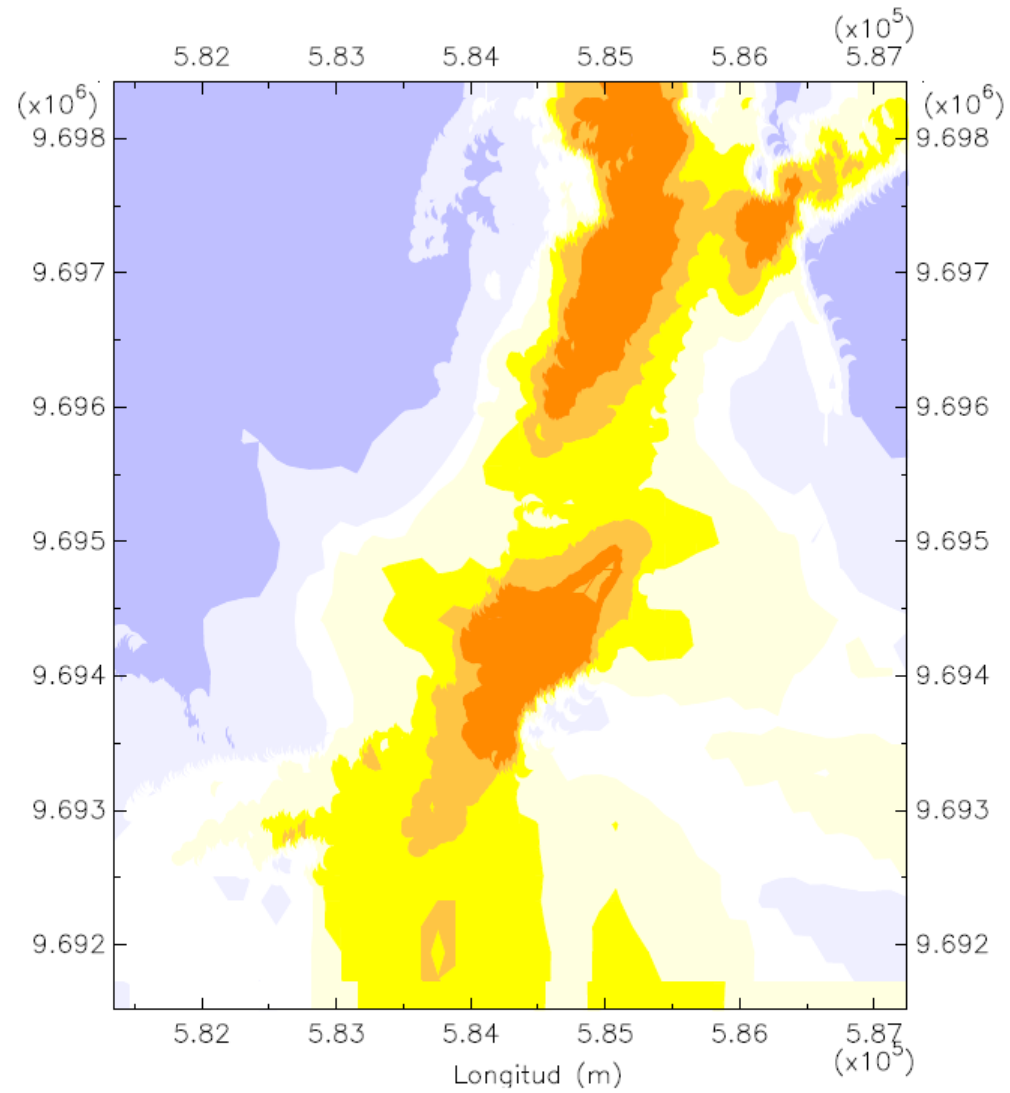
**Eslora: 225 m**

**Manga: 32.20 m**

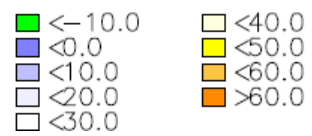
**Calado: 12 m**

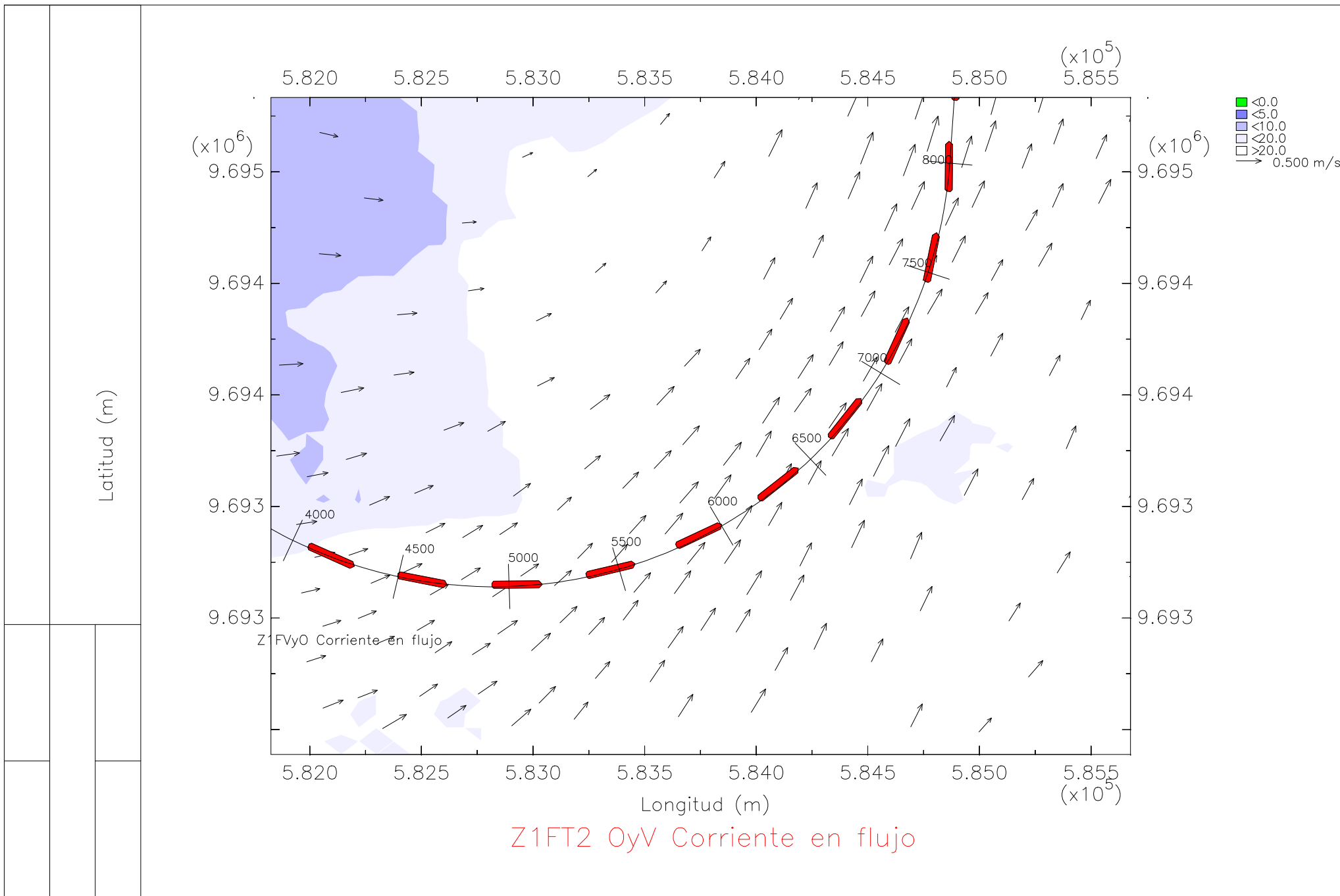
**En la zona 1, tramo 2**

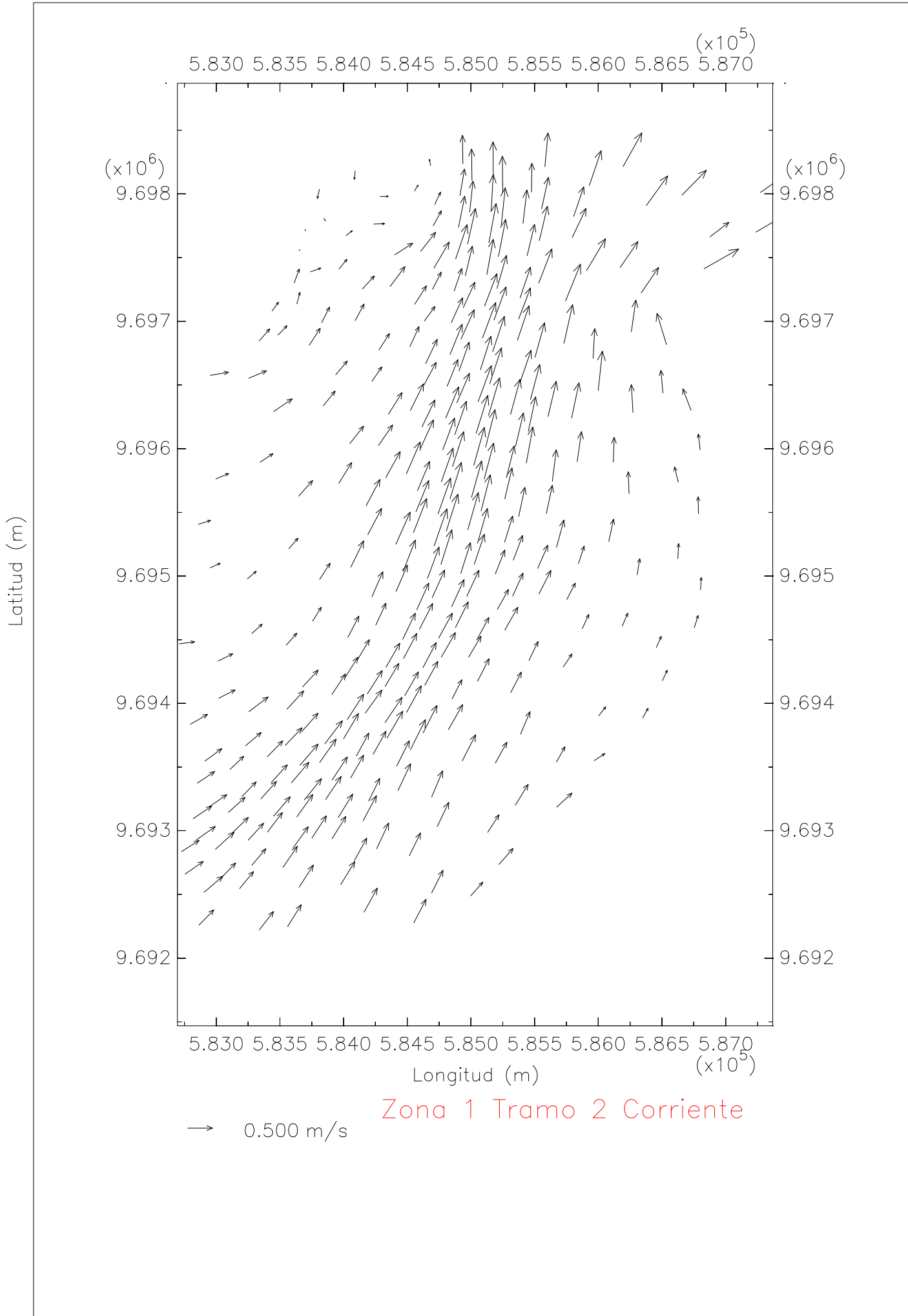
**Bajo condiciones de oleaje y llenante**

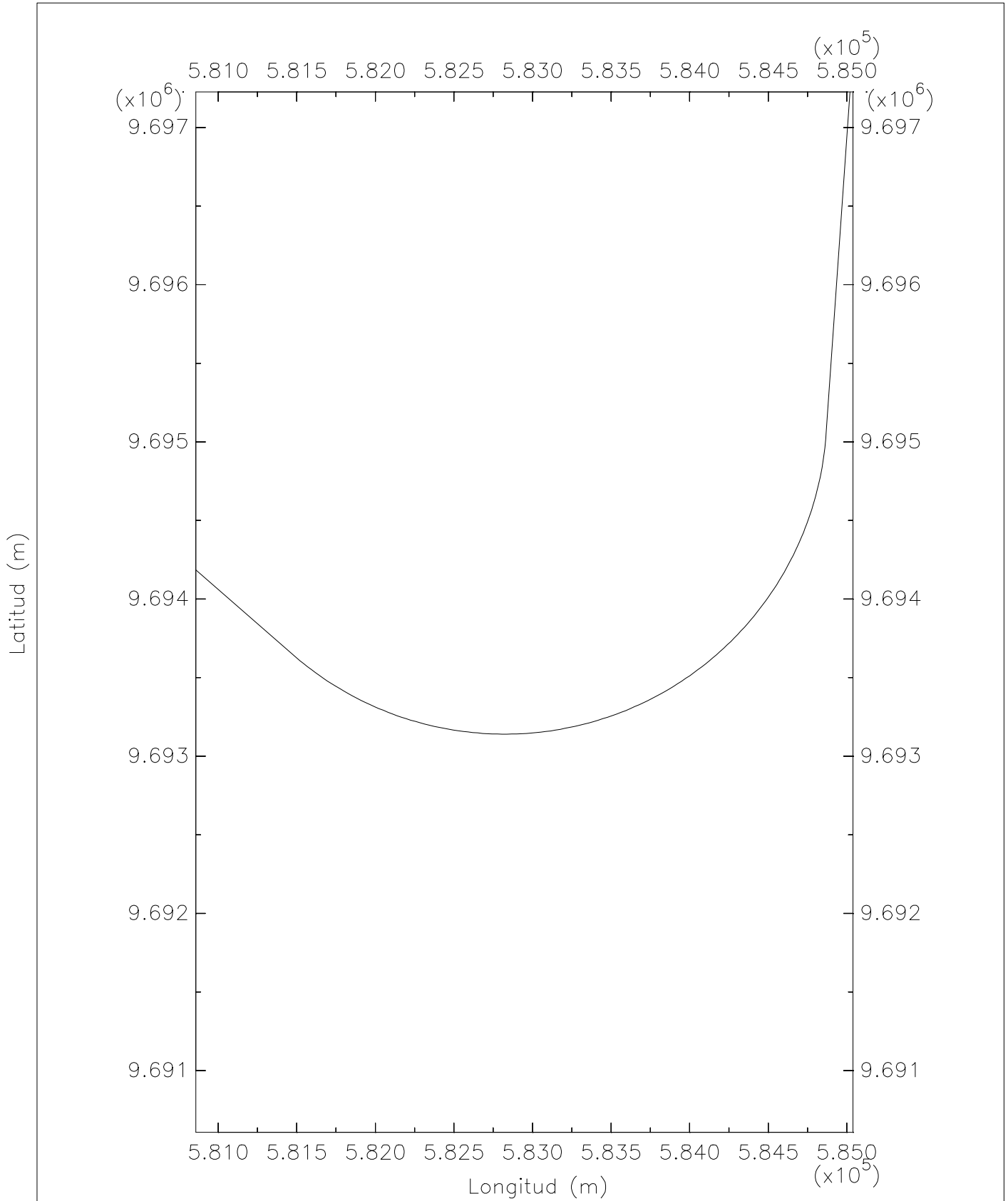


Zona 1 Tramo 2 Profundidad

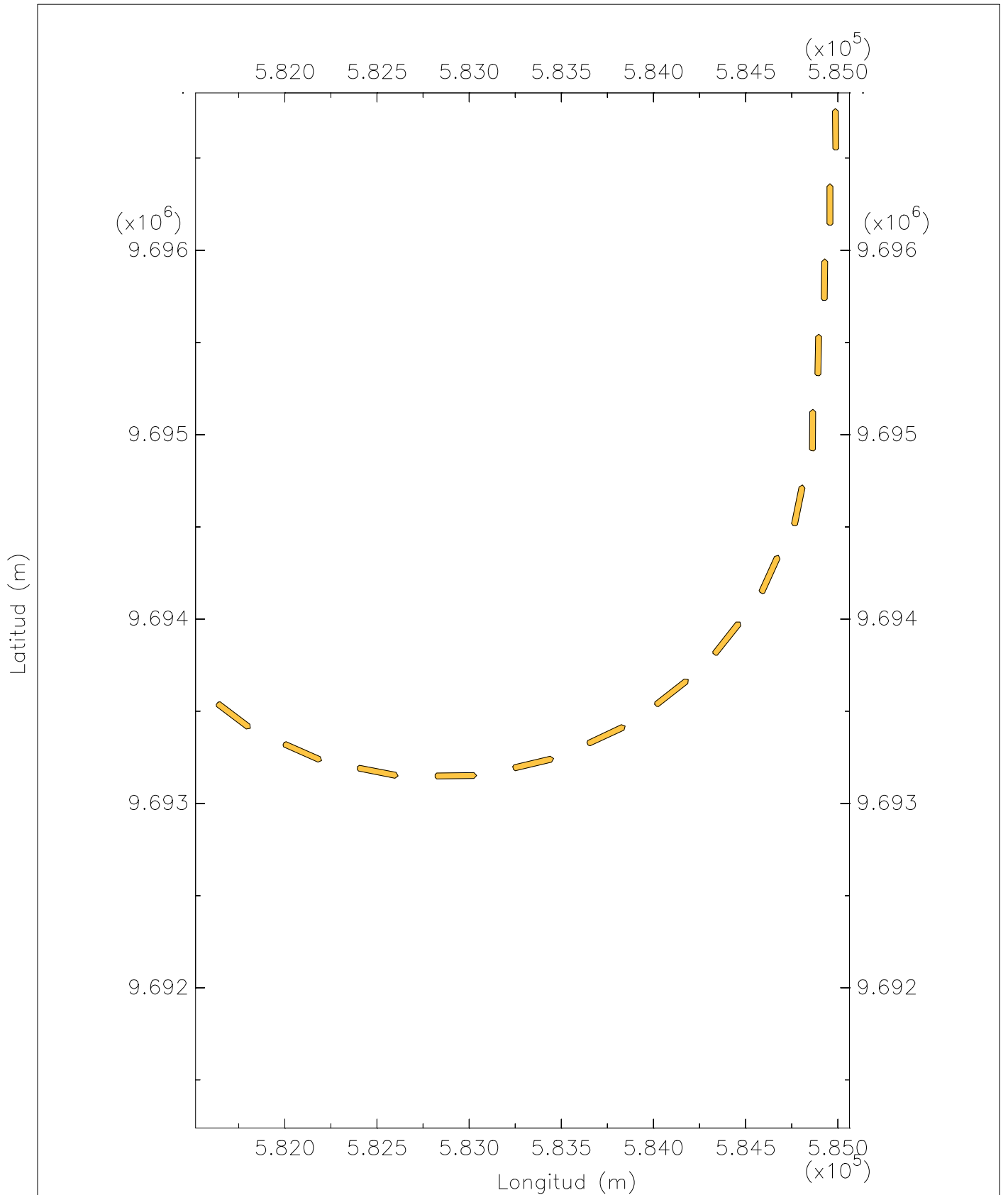






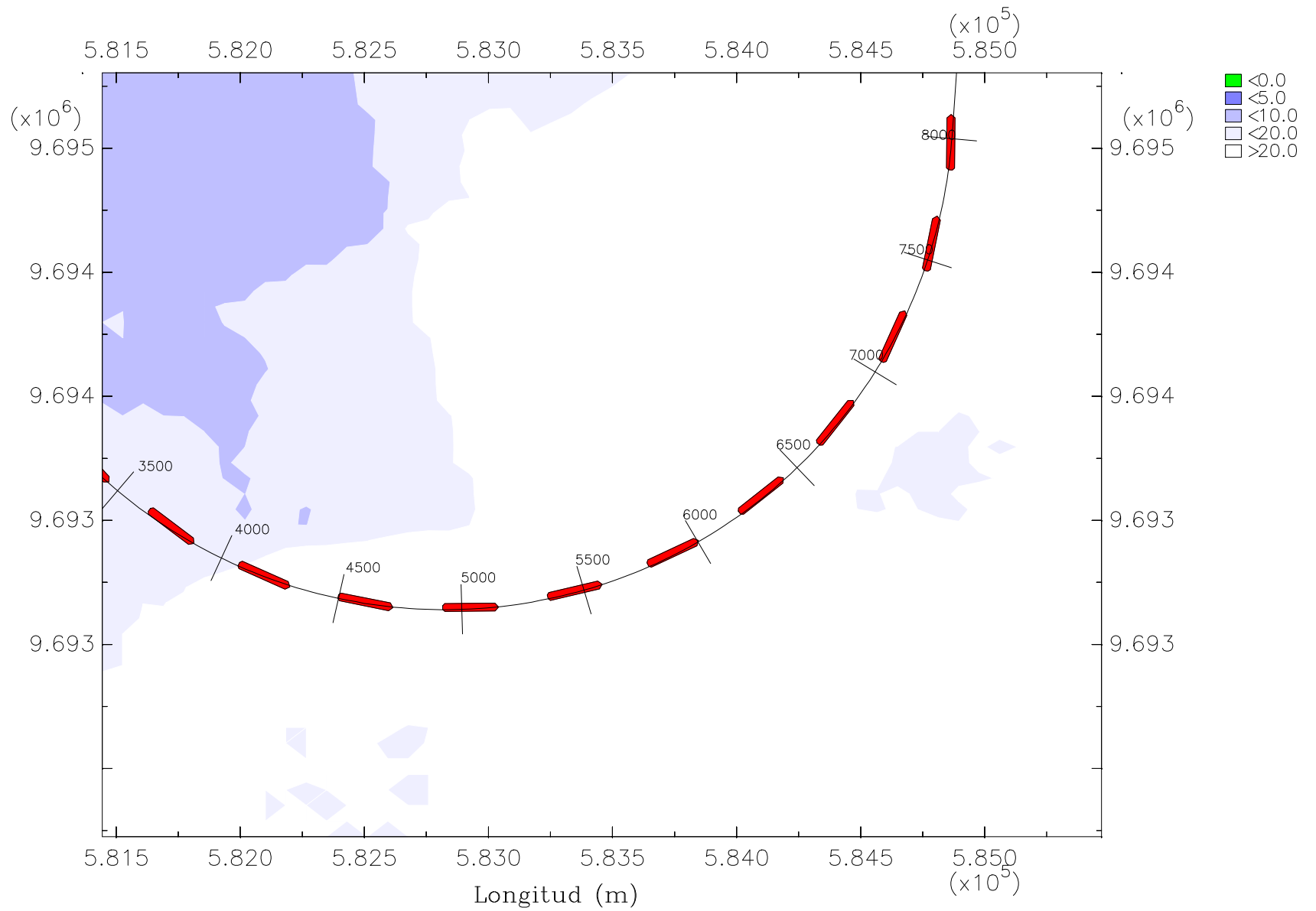


Zona 1 Tramo 2 Eje canal



Z1T20yV Trayectoria del barco granelero en flujo

Latitud (m)



Z1BGT2 OyV Trayectoria del barco granelero en flujo

